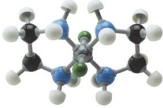


THE NEW CENTURY MEDICINE CAMPAIGN
FOR THE HEALTH SCIENCES FACILITY
PHASE II



UNIVERSITY OF MARYLAND
SCHOOL OF MEDICINE

STAYING IN TOUCH WITH TOMORROW



OUR NEED IS REAL.

Although the School of Medicine receives generous support from the state of Maryland, we are a state assisted institution responsible for raising our own funds to match the State's investment for major capital improvements. For the *New Century Medicine Campaign for the Health Sciences Facility II*, the state has provided \$4.5 million in planning money for the new facility. After the School of Medicine has achieved its goal of raising \$10 million in private support, the state will contribute the balance of the \$67 million project cost.



One medical investigator has called it "an extraordinary explosion of opportunity." Driven by rapid advances and breakthroughs on such fronts as genetic research and immunology, biomedical research in the 1990s is now poised at the verge of a new era of discovery—an era that could quickly lead to sweeping improvements in human health.

Today, the University of Maryland School of Medicine is in the top tier of America's groundbreaking biomedical research institutions. However, along with this ranking comes competition, as fellow institutions across the country vie for the honor and financial rewards of realizing various research findings first. To compete effectively, the School of Medicine must acquire the necessary physical resources to maintain its momentum.

More importantly, this issue is one that requires immediate action. In terms of research space, the School of Medicine has simply run out of room. Without the necessary state-of-the-art research facilities

to continue our existing research and to introduce new programs, we will soon face major shortfalls, including:

- The inability to compete in biomedical research on a national level
- The inability to capture additional and significant research funding
- The inability to attract world-class investigators—and to retain our present faculty
- The inability to create a leading-edge learning environment for our students
- The inability to develop research that could lead to the treatment and prevention of major diseases

With its stated goal of raising \$10 million over the next three years, the *New Century Medicine Campaign for the Health Sciences Facility II* will answer this need through the creation of a biomedical research center that is second to none. With your generous support, you can help us build a new future—for the School of Medicine and for the health of those we serve.

BRINGING DOWN THE NUMBERS.

According to the National Cancer Institute, Maryland has the nation's sixth highest cancer death rate. Dr. Angela Brodie, Professor in the School of Medicine's Department of Pharmacology and Experimental Therapeutics, is internationally recognized for the development of new anti-cancer drugs, which have shown promise in the treatment of prostate cancer.



FIGHTING PFIESTERIA. Faced with mounting public concern, the state of Maryland turned to Dr. Glenn Morris Jr., Professor of Medicine and Epidemiology and Preventive Medicine, to help determine whether pfiesteria outbreaks in local tributaries were making people ill. Morris and his investigators determined through examinations of those exposed that pfiesteria caused serious deficits in the ability to learn and remember ordinary things. These findings provided scientific backing for the state's decision to close rivers to swimming and fishing during such outbreaks.

